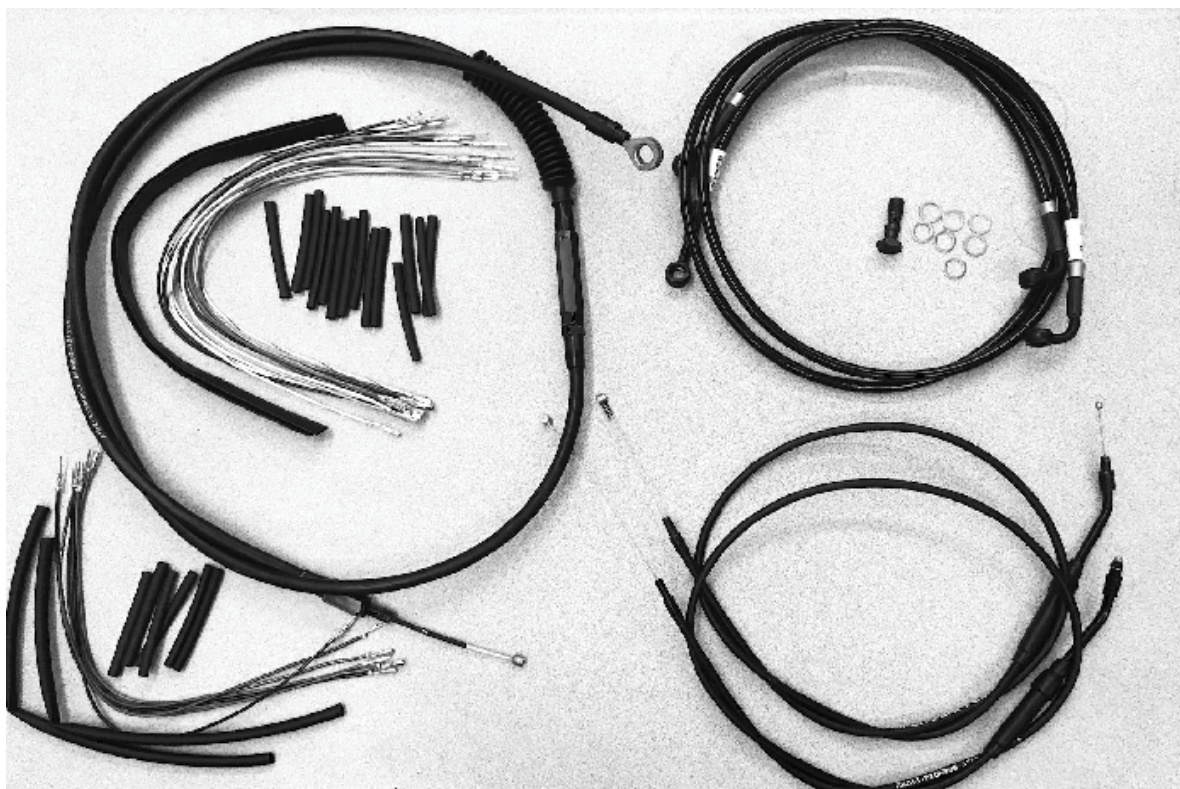


INSTALLATION INSTRUCTIONS

EXTENDED CABLE/LINE KIT
1996-2011 FXD (DUAL DISC)

PARTS INCLUDED:



WARNINGS & ALERTS

- This kit is designed for controlling Harley-Davidson OEM components only.
- The supplied clutch cable must be installed per factory specifications.
Torque not to exceed 60 in-lbs during installation.
- The operator must use extreme caution when operating a modified motorcycle, particularly while familiarizing himself with its altered characteristics.
- Once installation is complete, be certain ALL controls are properly adjusted to the specifications outlined in your factory authorized service manual before attempting to operate your motorcycle.

**READ ALL THE INSTRUCTIONS CAREFULLY BEFORE INSTALLING THIS KIT ON
YOUR MOTORCYCLE. USE YOUR AUTHORIZED HARLEY-DAVIDSON SERVICE
MANUAL AS A REFERENCE WHILE INSTALLING THIS KIT.**

Harley-Davidson is a registered trademark of the Harley-Davidson Motor Company Inc., Milwaukee, WI

*This instruction is appropriate for the models noted; However, you must confirm you have the correct kit part number for your specific bike by contacting Burly Brand

INSTALLATION INSTRUCTIONS

EXTENDED CABLE/LINE KIT

READ ALL THE INSTRUCTIONS CAREFULLY BEFORE INSTALLING THIS KIT ON YOUR MOTORCYCLE. USE YOUR AUTHORIZED HARLEY-DAVIDSON SERVICE MANUAL AS A REFERENCE WHILE INSTALLING THIS KIT.

IN PREPARATION TO INSTALL YOUR NEW HANDLEBARS AND CONTROL EXTENSION KIT, THE FOLLOWING MUST FIRST BE PERFORMED PER YOUR AUTHORIZED FACTORY SERVICE MANUAL:

DISASSEMBLY INSTRUCTIONS

1. Disconnect Battery.
2. Remove your stock control cables - Throttle, Idle, and Clutch cables - noting routing.
3. Drain your front brake reservoir & brake line and remove your stock brake line.
4. Remove the left handgrip, throttle, both handlebar switch housings and the wiring attached to them.

NOTE: If your handlebar wiring is mounted outside of the bars, you need to remove all wire ties that hold the wiring in place. If the wiring is run through the bars, carefully remove it by pulling on the wire, not on the housing (this may be easier by first removing the connector housings noted on page two in "WIRING HARNESS EXTENSION INSTALLATION INSTRUCTIONS").

5. Remove stock handlebars.

After completing these tasks, proceed with the three installation procedures (wiring, control cables, & brake-line) starting on next section.

WIRING HARNESS EXTENSION & INSTALLATION INSTRUCTIONS

1. As with any repair or modification involving the wiring system, first disconnect the battery.
2. Locate the left and right handlebar wiring connector housings. These are typically located under the fuel tank, tucked inside the frame, requiring the removal of the fuel tank - or at least removing some mounting bolts and lifting the front of the tank slightly to access the connectors. The connector housings are square or rectangular in shape and should either have 6 wires in each one (pre-2007) or have 6 wires for the right-hand controls and 8 for the left (2007-later). Also locate the turn signal connector housing(s), which should be in the same area.
3. Cut the wire-ties required to easily access these connector housings – as well as all the wire-ties from the forward connector housings to the handlebar controls, as these are the portions of the wiring harness that will be extended and they will need to be completely re-tied anyway.
4. Starting with either the left or right connector housing – but noting which is which – unplug the first connector housing and using some needle-nose pliers carefully either remove the orange wedge from inside the center of the housing (pre-2007), or pull out the white center locking device of the housing (2007- later). Using the diagram/worksheet on page five of these instructions, write down which color wire is in which position in the connector housing. On pre- 2007 models use a small screw driver to carefully move the locking finger away from each wire as you gently pull the wire out of the connector housing from the back. On 2007-later models, simply use a



INSTALLATION INSTRUCTIONS

EXTENDED CABLE/LINE KIT

WIRING HARNESS EXTENSION & INSTALLATION INSTRUCTIONS -CONT.

paper clip to carefully push the connectors out of the housing. Be sure to hold the rear seal of the connector housing in place as you do this, as removing the wires may displace the seal. At this point, if your handlebar control harnesses are running through your current handlebars, which you are replacing, then carefully pull them out of the handlebars by pulling the wire harness itself – not the handlebar control.

5. Now with all the wires free of the connector housing choose the corresponding color extension wire from the Burly kit and firmly plug the proper end onto the wire on the handlebar controller harness.

NOTE: there are 6 extension wires in the kit with different ends - these are intended for extending the turn signal wiring harness only.

6. If there is no corresponding color extension wire, then choose the closest color and be sure to note the new color next to the old on the diagram/worksheet you wrote the original color and positions on page 3. Repeat for all wires. The most important thing is that the same wire (though now extended) gets back into the same position in the connector housing – but do not reinstall the wires into the housing yet.
7. One by one, slide the smaller 1/8" inch heat-shrink tubing over each extension connection and apply heat from a heat gun until the tubing has shrunk snugly around the connection. After doing this to all the wires, slide the large 3/8" inch heat-shrink tubing over all the wires and apply heat from a heat gun until they are snugly wrapped into a tight bundle. At this point, if you are running your wires through your handlebars, you should do this now before reinstalling the connector housing. Otherwise continue to next step.
8. Using the notes you made earlier regarding

which color wire goes in which position in the connector housing – noting any color variations of the extensions – push the proper color wire contact straight into the connector housing grommet until a "click" is felt. A slight tug will confirm that it is locked into place. Repeat for all wires.

9. Once all the contacts are back in place, re-insert the Orange Wedge (pre-2007) in the same orientation as it came out, or push back down into the center of the housing the white locking device (2007-later). Either center piece will snap into place locking the connectors into the housing.
10. Repeat the last five steps on the other handlebar control harness, then the turn signal harness (using the 6 special ended extensions for the turn signal harness).
11. Install new handlebars and reinstall left and right handlebar control switches & turn signals per your factory authorized service manual.
12. At this point you are ready to plug your left and right handlebar control harnesses back into the main harness – be sure to plug the left into the left and the right into the right. Also don't forget to plug the turn signal harness back in too. It's suggested that you hook the battery back up and make sure everything functions properly. After doing that, re-secure the wire harness at the same points it was secured and reinstall the fuel tank per your factory authorized service manual and proceed to cable and brake line installation.



INSTALLATION INSTRUCTIONS

EXTENDED CABLE/LINE KIT

READ ALL THE INSTRUCTIONS CAREFULLY BEFORE INSTALLING THIS KIT ON YOUR MOTORCYCLE. USE YOUR AUTHORIZED HARLEY-DAVIDSON SERVICE MANUAL AS A REFERENCE WHILE INSTALLING THIS KIT.

CONTROL CABLE INSTALLATION INSTRUCTIONS

1. Install the Burly extended control cables as you would stock cables per your factory authorized service manual - noting to route the new longer cables in such a manner that no kinking or binding occurs through entire range of steering. Check this by turning the handlebars all the way to the left and right while operating the controls.

WARNING: The supplied clutch cable must be installed per the factory recommended torque specifications. Refer to your factory service manual for proper torque specification. Exceeding the recommended maximum torque value of 60 in-lbs could lead to clutch cable malfunction resulting in loss of control, injury or death.

2. Adjust the Clutch, Throttle, & Idle cables per the procedure described in your factory authorized service manual to ensure proper operation.

BRAKE LINE INSTALLATION INSTRUCTIONS

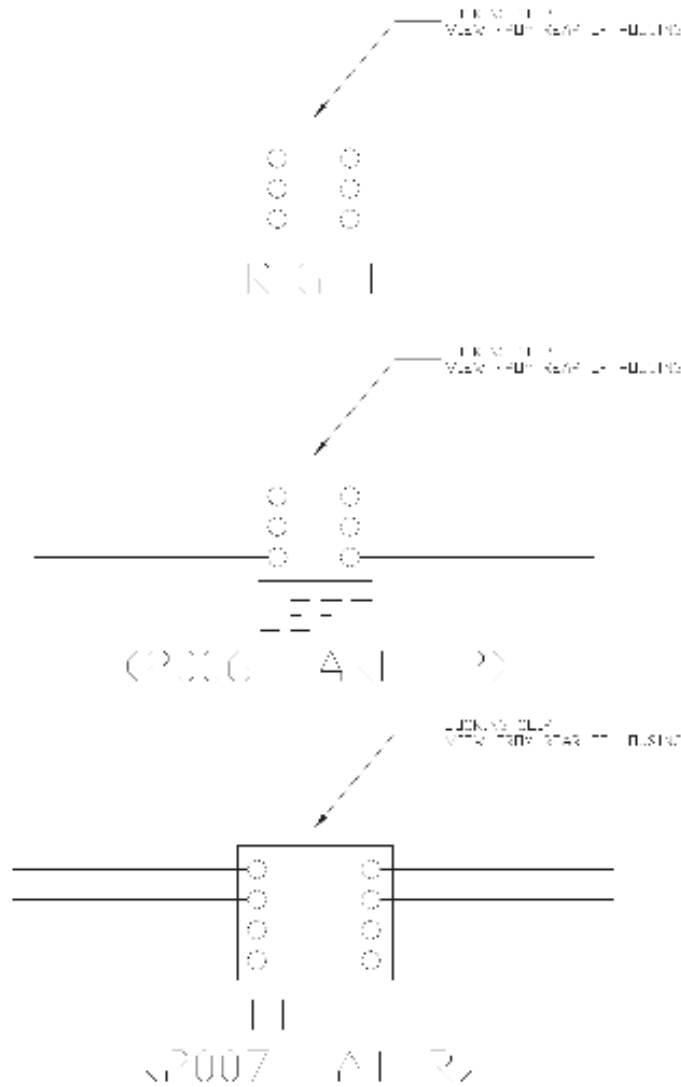
1. Install the Burly Tru Dual extended brake lines using the supplied longer banjo bolt and three crush washers and the 20 degree bend banjos, installing into the master cylinder. Route the brake hoses through the upper and lower triple trees, around the headlight bucket, with one hose on each side of the frame. Connect the lower 90 degree banjos to the calipers using the stock banjo bolts and new crush washers.
2. Be sure to route the brake hoses in a manner that will prevent binding, stretching and kinking throughout the entire range of steering and when the fork is completely extended or compressed.
3. Refill the brake system with the recommended fluid and bleed any air out of it per the procedure described in your factory authorized service manual.

After installing these components it is vital that ALL controls must be adjusted to the recommended specifications noted in your factory authorized service manual. DO NOT attempt to operate the vehicle before making such adjustments or damage, injury, or death may result.



INSTALLATION INSTRUCTIONS

EXTENDED CABLE/LINE KIT



LIMITED GUARANTEE

We continually inspect and try to improve our products. All parts have been inspected prior to packaging, and our guarantee is limited to replacement of defective parts. This guarantee is in lieu of all guarantees or warranties implied or expressed. Because we can not control the application of our products, the buyer assumes risks for any and all damage caused by themselves or any third party, by virtue of failure of these parts. We make no warranty as to products distributed by us, expressed or implied, including without limitation, any warranties or merchant ability and fitness for particular purpose. We will, however, pass on all warranties made by the manufacturer, who has sole responsibility for performing such warranties. The manufacturer shall solely be responsible for any damage to person or property arising from design, manufacturing and testing of all products, and we accept no liability for such damages. We shall not be liable for indirect or consequential damages.

