



# INSTALLATION INSTRUCTIONS

## EXTENDED CABLE LINE KIT

### 2000-2006 FLHR/I/CI/S/SI & FLTR/I ®

### 2006-2007 FLHX ®

#### PARTS INCLUDED



NOTE: Parts may vary slightly from picture

#### LIMITED LIABILITY

We continually inspect and try to improve our products. All parts have been inspected prior to packaging, and our guarantee is limited to replacement of defective parts. This guarantee is in lieu of all guarantees or warranties implied or expressed. Because we cannot control the application of our products, buyer assumes risks for any and all damage caused by himself or third party, by virtue of failure of these parts. We make no warranty as to products distributed by us, expressed or implied, including without limitation any warranties or merchant ability and fitness for a particular purpose. We will however, pass on all warranties made by the manufacturer, who has sole responsibility for performing such warranties. The manufacturer shall solely be responsible for any damage to person or property arising from design, manufacturing and testing of all products, and we accept no liability for such damages. We shall not be liable for indirect or consequential damages.

#### WARNINGS & ALERTS

- This kit is designed for controlling Harley-Davidson™ OEM components only and it is intended for models without anti-lock brake systems (ABS).
- The supplied clutch line must be installed per factory specifications
- Operators must use extreme caution when operating a modified motorcycle, particularly while familiarizing themselves with its altered characteristics.
- Once installation is complete, be certain ALL controls are properly adjusted to the specification outlined in your factory authorized service manual before attempting to operate your motorcycle.

*Read all the instructions carefully before installing this kit on your motorcycle. Use your authorized Harley-Davidson™ service manual as a reference while installing this kit.*

#### DISASSEMBLY INSTRUCTIONS

In preparation to install your new handlebars and control extension kit, the following must be removed per your authorized service manual.

- Disconnect battery.
- Remove Fairing to access control connector housings.
- Remove your stock clutch cable - noting routing.
- Remove stock Throttle Control, complete with twist grip and wiring.
- Remove front brake reservoir & lever assembly from the handlebars - but do not loosen the brake-line or open the system.
- Remove the left hand grip, both handlebar switch housings and the wiring attached to them.

**NOTE:** If your handlebar wiring is mounted outside the bars, you need to remove all wire-ties that hold the wiring in place. If the wiring is run through the bars, carefully remove it by pulling on the wire, not on the housing (this may be easier by first removing the connector housings noted on page 2. "WIRING HARNESS EXTENSION INSTALLATION".

- Remove stock handlebars.

After completing these tasks, proceed with the three installation procedures beginning on page 2.

# EXTENDED CABLE/LINE KIT

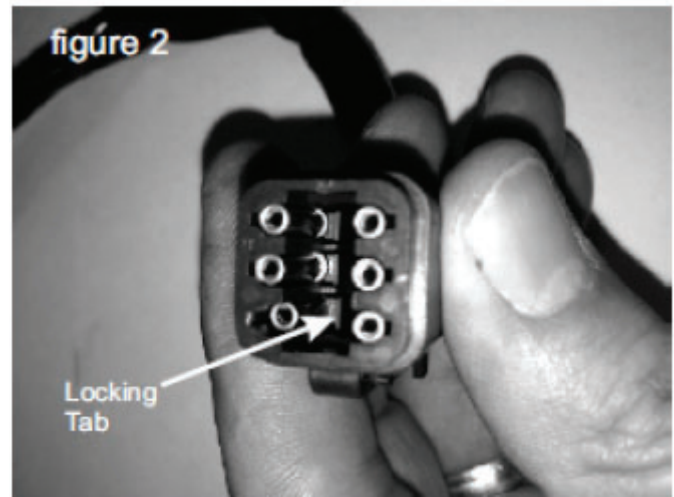
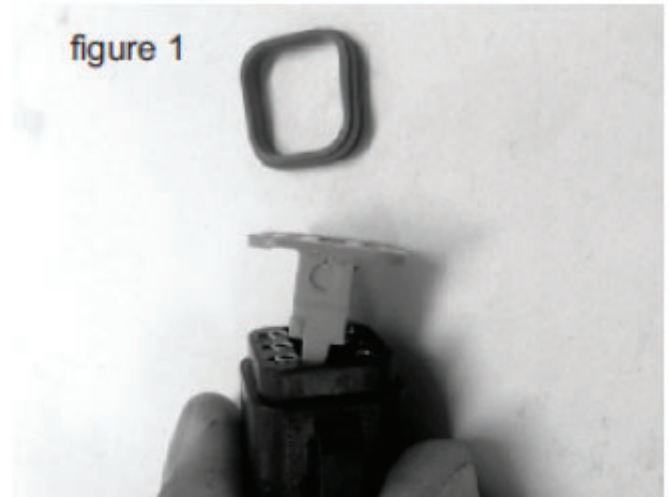
## 2000-2006 FLHR/I/CI/S/SI & FLTR/I ®

## 2006-2007 FLHX ®

READ ALL THE INSTRUCTIONS CAREFULLY BEFORE INSTALLING THIS KIT ON YOUR MOTORCYCLE. USE YOUR AUTHORIZED HARLEY-DAVIDSON™ SERVICE MANUAL AS A REFERENCE WHILE INSTALLING THIS KIT.

### WIRING HARNESS EXTENSION INSTALLATION INSTRUCTIONS

1. Be sure you have completed the steps in the previous section, including DISCONNECTING THE BATTERY, before continuing!
2. Locate the left and right handlebar wiring connector housings. These are typically located behind the headlight. The connector housings are rectangular in shape and should have 6 or 12 wire positions (black) for the right-hand controls and 6 or 12 (gray) for the left. Some models with optional cruise control may also have a left and right 3-wire position connector housing.
3. Cut the wire-ties required to easily access these connector housings – as well as all the wire-ties from the forward connector housings to the handlebar controls, as these are the portions of the wiring harness that will be extended and they will need to be completely re-tied.
4. Starting with either the left or right connector housing – but noting which is which – unplug the first connector housing and use a small flat blade screwdriver to carefully pry the orange cover and seal off (fig 1). Using the diagram/worksheet on Pg 4, write down which color wire is in which position in the connector housing - **NOTE:** not all positions in the connector housing may be used on all models. Using a pick gently push the Locking Tab away from the Connector and pull it out of the Housing (fig 2). Repeat for each wire. Be sure to hold the rear seal of the connector housing in place as you do this,



**BURLY BRAND**  
MOTORCYCLE  ACCESSORIES

888-367-1871 | 714-367-1871

INFO@BURLYBRAND.COM | BURLYBRAND.COM

# EXTENDED CABLE /LINE KIT

## 2000-2006 FLHR/I/CI/S/SI & FLTR/I ®

## 2006-2007 FLHX ®

### WIRING HARNESS EXTENSION INSTALLATION INSTRUCTIONS (CONT.)

as removing the wires may displace the seal. At this point, if your handlebar control harnesses are running through your current handlebars, which you are replacing, then carefully pull them out of the handlebars by pulling the wire harness itself – not the handlebar control.

5. Now with all the wires free of the connector housing, choose the corresponding color extension wire from the Burly kit and firmly plug the proper end onto the wire on the handlebar controller harness.
6. If there is no corresponding color extension wire, then choose the closest color and be sure to note the new color next to the old on the diagram/worksheet you wrote the original color and positions on (Pg 4). Repeat for all wires. The most important thing is that the same wire (though now extended) gets back into the same position in the connector housing – but do not reinstall the wires into the housing yet.
7. One by one, slide the smaller 1/8" inch heat-shrink tubing over each extension connection and apply heat from a heat gun until the tubing has shrunk snugly around the connection. After doing this to all the wires, slide the large 3/8" inch heat-shrink tubing over all the wires and apply heat from a heat gun until they are snugly wrapped into a tight bundle.

**NOTE:** For in-bar wiring, these next three steps need to be completed AFTER running the wires through the Handlebars (see next page).

8. Using the notes you made earlier regarding which color wire goes in which position in the connector housing – noting any color variations of the extensions – push the proper color wire contact straight into the connector housing grommet until a “click” is felt. A slight tug will confirm that it is locked into place. Repeat for all wires. Be careful not to accidentally use any positions in the connector housing that were previously unused.
9. Once all the contacts are back in place, push the orange cover & seal back down into the center of the housing - the center piece will snap into place locking the connectors into the housing.
10. Repeat the last five steps on the other handlebar harnesses.



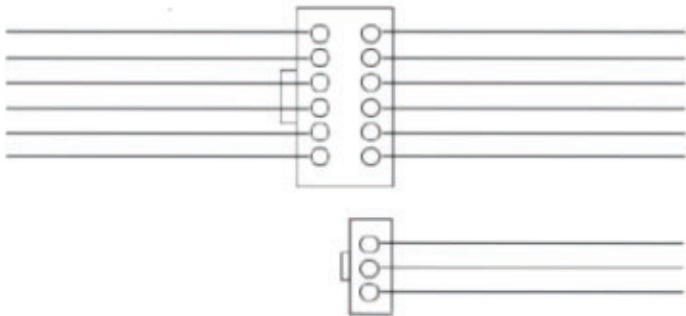
# EXTENDED CABLE /LINE KIT

## 2000-2006 FLHR/I/CI/S/SI & FLTR/I ®

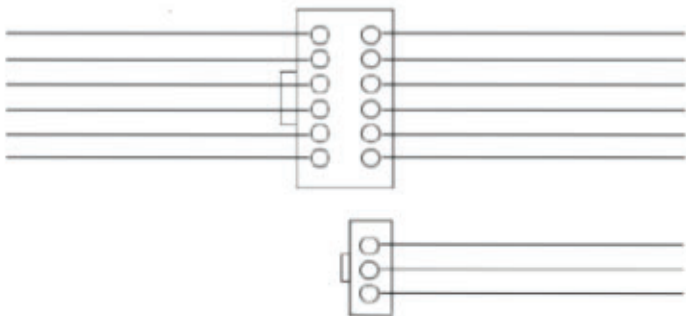
## 2006-2007 FLHX ®

### WIRING HARNESS EXTENSION INSTRUCTIONS (CONT.)INUED

Wiring Worksheet - LEFT (Grey)



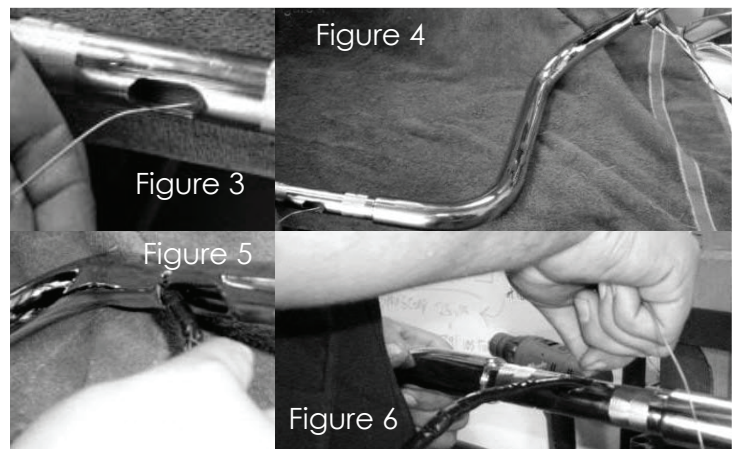
Wiring Worksheet - RIGHT (Black)



### INSTALLATION INSTRUCTIONS

#### Routing your wiring through your handlebar

1. Using a wire "fish tape" tool or similar (thin wire coat hanger, or safety wire) fish all the wires through your new handlebars from the bar-ends down to the middle and out to where the main harness connectors will be located. It is best to fish the wire tool up through the bars in the middle (Figure 3) and out by the control area first, then secure the newly extended wire harness to that wire tool (Figure 4) and carefully "pull" the wire harness back down through the handlebars to the center and out, while feeding the harness into the bar at the control area (Figure 5). Repeat on other side (Figure 6).
2. Install new handlebars and reinstall left and right handlebar control switches & turn signals (if removed) per your factory authorized service manual.
3. At this point you are ready to plug your left and right handlebar control harnesses back into the main harness; be sure to plug the left plug(s) into the left socket(s) and the right plug(s) into the right socket(s). Also don't forget to plug the turn signal harness back in too (if separate from the control harnesses).
4. Now hook the battery back up and make sure everything functions properly. After doing that, re-secure the wire harness at the same points it was secured and proceed to CONTROL CABLE and BRAKE LINE INSTALLATION.



**BURLY BRAND**  
MOTORCYCLE  ACCESSORIES



# EXTENDED CABLE /LINE KIT

## 2000-2006 FLHR/I/CI/S/SI & FLTR/I ®

## 2006-2007 FLHX ®

### CONTROL CABLE INSTALLATION

1. Install the Burly extended clutch cable as you would a stock cable per your factory authorized service manual - noting to route the new longer cable in such a manner that no kinking or binding occurs through entire range of steering. Check this by turning the handlebars all the way to the left and right while operating the controls.

**Warning!** The supplied clutch cable MUST be installed per the factory recommended torque specifications. Refer to your factory service manual for proper torque specification. Exceeding the recommended maximum torque value of 60 in-lbs could lead to clutch cable malfunction resulting in loss of control, injury or death.

2. Adjust the clutch cable per the procedure described in your factory authorized service manual to ensure proper operation.
3. Install the Burly extended throttle and idle cables as you would stock cables per your factory authorized service manual - noting to route the new longer cables in such a manner that no kinking or binding occurs through the entire range of steering. Check this by turning the handlebars all the way to the left and right while operating the controls. If you are installing an extended idle cable with the Cruise Control Roll Off switch (this will be located at the front of the gas tank) be sure to connect the wiring from the harness.

### BRAKE LINE INSTALLATION

1. Install the Burly extended Brake Line as you would a stock brake line per your factory authorized service manual - noting the following; replace the stock fastener for the line junction block with the one supplied with this kit, and route the new longer Brake Line in such a manner that no kinking or binding occurs through entire range of steering. Check this by turning the handlebars all the way to the left and right while carefully observing the Brake Line. Also make sure there is no binding or stretching of the line when the front fork is completely extended or compressed.
2. Refill the brake system with the recommended fluid and bleed any air out of it per the procedure described in your factory authorized service manual. Check for leaks and repair if need be.

**After installing these components it is vital that ALL controls be adjusted to the recommended specifications noted in your factory authorized service manual. DO NOT attempt to operate the vehicle before making such adjustments or damage, injury, or death may result.**

