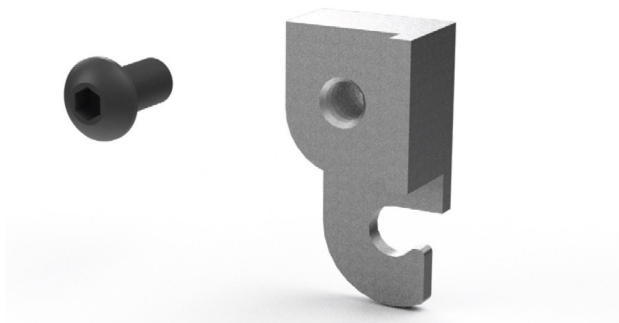


INSTALLATION INSTRUCTIONS

SPORTSTER "EASY BOY" LITE CLUTCH KIT

WARNINGS & ALERTS:

- READ AND FOLLOW ALL INSTRUCTIONS FOR PROPER INSTALLATION.
- IMPROPER INSTALLATION CAN CAUSE UNSATISFACTORY AND/OR UNSAFE OPERATION.
- READ ALL THE INSTRUCTIONS CAREFULLY BEFORE INSTALLING THIS KIT ON YOUR MOTORCYCLE. USE YOUR SERVICE MANUAL AS A REFERENCE WHILE INSTALLING THIS KIT.



1. Loosen the clutch cable adjustment completely. Remove any OEM parts that are blocking removal of the left side clutch inspection cover.
2. Remove left side clutch inspection cover. Remove the hex lock plate from the clutch adjusting screw. Turn the adjustment screw clockwise all the way until the inner nut can be fully removed. Remove the clutch ramp assembly and cable connector from the motorcycle.
3. Add new Burly Brand EZ Clutch extension to your clutch ramp assembly. **Apply medium strength loctite** on the bolt and torque to 10 ft-lbs. (Figure 1.) Ensure the extension is properly aligned with the clutch ramp assembly arm.
4. Refit cable connector between clutch cable end and Burly Brand EZ clutch extension. (Figure 2) Reinstall clutch release ramp assembly in same orientation as removed. Reinstall adjustment nut and use flathead screwdriver to adjust by turning counterclockwise until resistance is felt, then back off 1/4 turn. (Figure 3) Reinstall lock plate and spring.
5. Install clutch inspection cover. Torque bolts to 90-120 in-lbs in crosswise pattern.
6. Adjust clutch cable free play between cable and lever housing to 1/16" to 1/8"



FIGURE 1

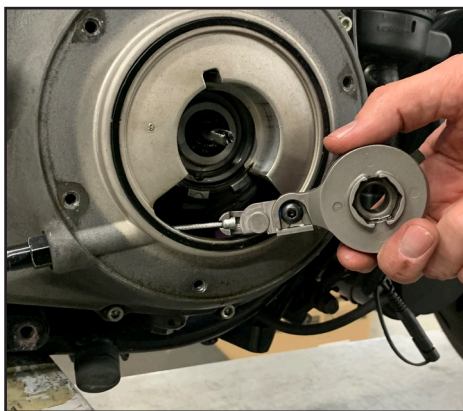


FIGURE 2

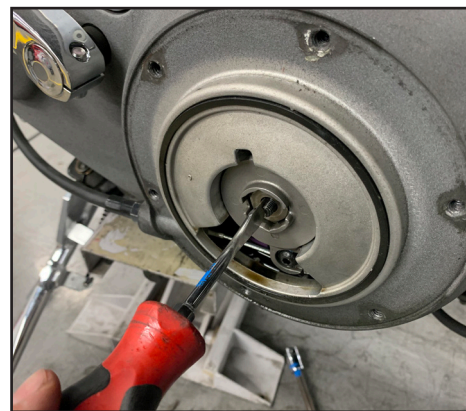


FIGURE 3

LIMITED GUARANTEE

We continually inspect and try to improve our products. All parts have been inspected prior to packaging, and our guarantee is limited to replacement of defective parts. This guarantee is in lieu of all guarantees or warranties implied or expressed. Because we can not control the application of our products, the buyer assumes risks for any and all damage caused by themselves or any third party, by virtue of failure of these parts. We make no warranty as to products distributed by us, expressed or implied, including without limitation, any warranties or merchant ability and fitness for particular purpose. We will, however, pass on all warranties made by the manufacturer, who has sole responsibility for performing such warranties. The manufacturer shall solely be responsible for any damage to person or property arising from design, manufacturing and testing of all products, and we accept no liability for such damages. We shall not be liable for indirect or consequential damages.