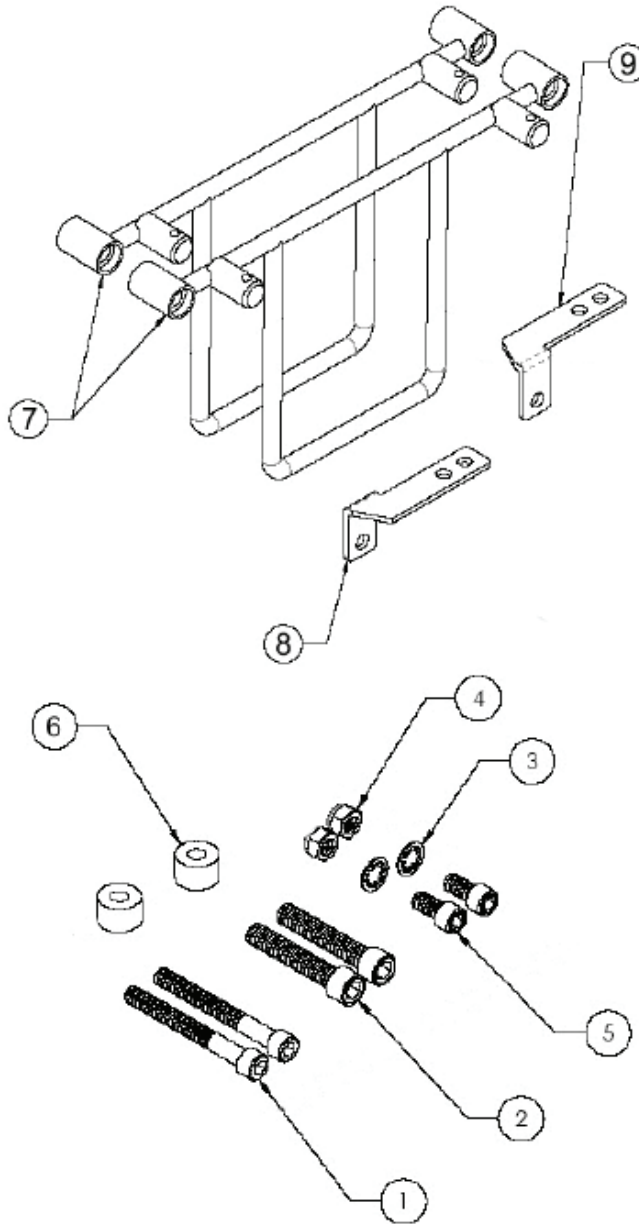


PARTS KIT DIAGRAM



ITEM NO.	DESCRIPTION	QTY.
1	SHCS 5/16-18 X 2.75	2
2	SHCS 3/8-16 X 2.0	2
3	WASHER 5/16 INTERNAL TOOTH LOCK	2
4	NUT 5/16-18 ELASTIC LOCK	2
5	SHCS 5/16-18 X 5/8	2
6	SPACER	2
7	SADDLEBAG BRACKET	2
8	TURN SIGNAL BRACKET LH	1
9	TURN SIGNAL BRACKET RH	1

WARNINGS & ALERTS

- If your motorcycle has a side-mounted license bracket, you will need to relocate it prior to installing your Burly Saddlebag Brackets. Neither this kit, nor these instructions cover this process.
- Read and follow all instructions to properly install this kit!

BURLY SADDLEBAG BRACKETS

INSTALLATION INSTRUCTIONS

- Remove the stock fender mounting bolts, being careful not to lose the small thin washers or nuts as they will be reused. If fender-to-tire clearance makes it difficult to get the hardware under the fender, you may need to lift the motorcycle with a stand or jack to allow the wheel to drop down out of the way to access the inner fender hardware or remove the lower shock bolts to allow the wheel to drop.

DYNA Models: The rear fender bolt goes through the turn signal fixture. Remove the nut from the inside of the fender.

Turn Signal Removal

- Remove seat
- Unplug the connectors that lead to the turn signals.
- Carefully remove the turn signal wiring from inner fender trim plate.
- Carefully pull the wiring through the fender strut. (Figure 1).
- Remove turn signal from the turn signal strut.

BURLY SADDLEBAG BRACKET (cont.) Turn Signal Bracket Install

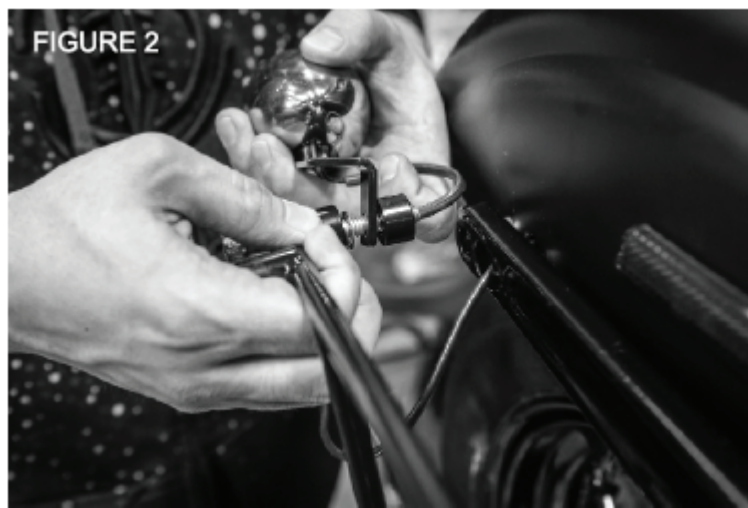
- Route the turn signal wire through the second hole of the turn signal bracket as shown in Figure 1.



- Mount the turn signal to the supplied turn signal bracket using the 5/16-18 x 5/8" bolt (shortest bolt).

Mount the Bracket to the Fender Strut

- Forward mounting holes will use the 3/8-16 x 2" Bolt (Thickest bolt) and use the stock inner fender trim plate to screw through, DO NOT tighten at this time.
- Rear mounting holes will use the 5/16-18 x 2.75" Bolt (longest bolt) and use the supplied locking nut inside the fender.
- Wire the turn signal wire through the turn signal mounting hole as shown in Figure 2.
- Place the rear bolt through the bracket.
- Place the Locking Washer, Light bracket, and spacer onto the bolt as shown in Figure 2.



- Gently push bolt through the rear fender mounting hole and use supplied locking nut inside the fender.
- Tighten front and rear to 18 ft.-lbs.

End Result, repeat for other side.



End result, repeat for other side



LIMITED WARRANTY

We continually inspect and try to improve our products. All parts have been inspected prior to packaging, and our guarantee is limited to replacement of defective parts. This guarantee is in lieu of all guarantees or warranties implied or expressed. Because we cannot control the application of our products, buyer assumes risks for any and all damage caused by himself or third party, by virtue of failure of these parts. We make no warranty as to products distributed by us, expressed or implied, including without limitation any warranties or merchant ability and fitness for a particular purpose. We will however, pass on all warranties made by the manufacturer, who has sole responsibility for performing such warranties. The manufacturer shall solely be responsible for any damage to person or property arising from design, manufacturing and testing of all products, and we accept no liability for such damages. We shall not be liable for indirect or consequential damages.