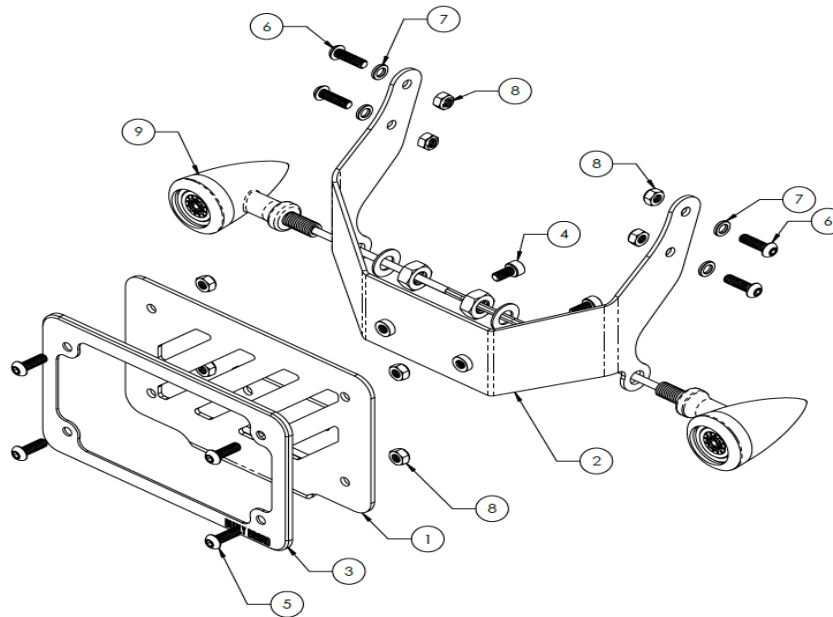


KIT CONTENTS



QTY	DESCRIPTION
1	LICENSE PLATE MOUNT
1	LICENSE PLATE BRACKET
1	LICENSE PLATE FRAME
2	SHCS STAINLESS
4	BHCS STAINLESS
4	BHCS STAINLESS
4	WASHER THICK STAINLESS
8	NUT ELASTIC LOCK
2	TURN/BRAKE LIGHT

LIMITED GUARANTEE

We continually inspect and try to improve our products. All parts have been inspected prior to packaging, and our guarantee is limited to replacement of defective parts. This guarantee is in lieu of all guarantees or warranties implied or expressed. Because we can not control the application of our products, the buyer assumes risks for any and all damage caused by themselves or any third party, by virtue of failure of these parts. We make no warranty as to products distributed by us, expressed or implied, including without limitation, any warranties or merchant ability and fitness for particular purpose. We will, however, pass on all warranties made by the manufacturer, who has sole responsibility for performing such warranties. The manufacturer shall solely be responsible for any damage to person or property arising from design, manufacturing and testing of all products, and we accept no liability for such damages. We shall not be liable for indirect or consequential damages.

INSTALLATION INSTRUCTIONS

REAR TAG MOUNT - HONDA REBEL

WARNINGS & ALERTS:

- THIS LICENSE PLATE KIT IS NOT DOT COMPLIANT.
- WIRE EXTENSIONS AND LOAD EQUALIZERS NOT INCLUDED.
- READ AND FOLLOW ALL INSTRUCTIONS TO PROPERLY INSTALL THIS KIT.
- IMPROPER INSTALLATION CAN CAUSE UNSATISFACTORY AND/OR UNSAFE OPERATION.
- READ ALL THE INSTRUCTIONS CAREFULLY BEFORE INSTALLING THIS KIT ON YOUR MOTORCYCLE. USE YOUR HONDA SERVICE MANUAL AS A REFERENCE WHILE INSTALLING THIS KIT.

DISASSEMBLY

1. Remove the rider seat and storage bin underneath.
2. Disconnect all the wires that lead to the taillight section.
3. Take off the bolts that hold the rear fender.
4. Remove the three bolts that hold the taillight section to the fender and rear bracket.
5. Carefully remove the taillight section and rear fender.
6. Take off the four hex bolts that connect the rear bracket to the struts and remove rear bracket.

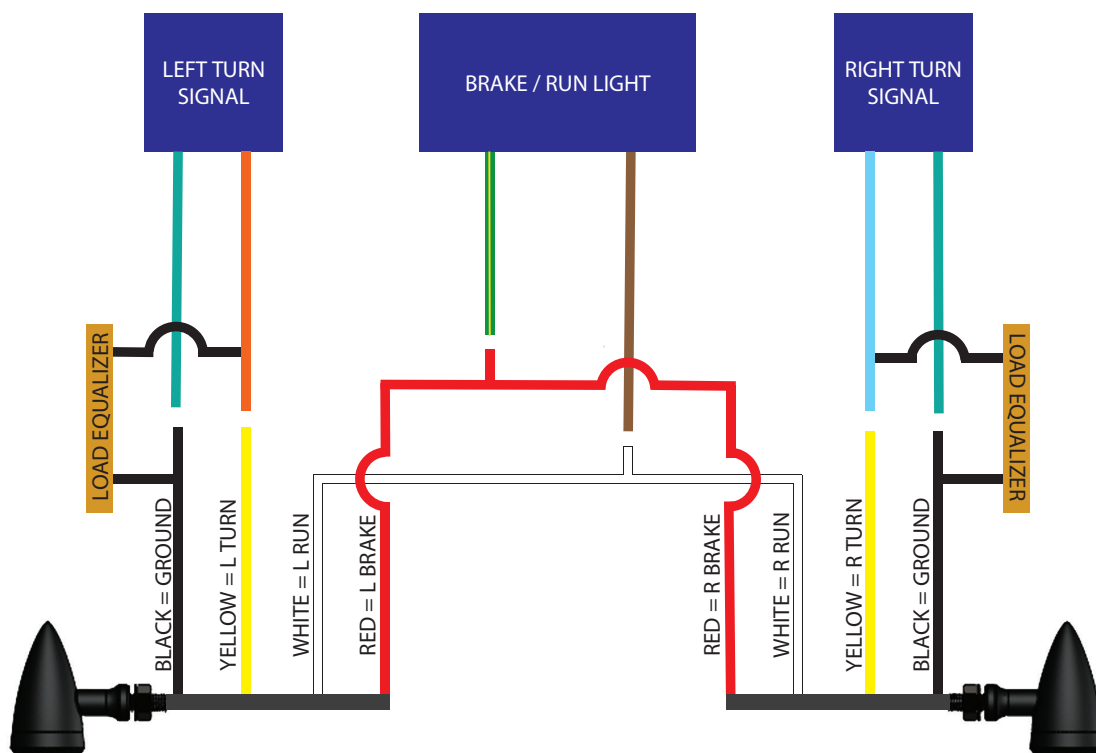


INSTALLATION INSTRUCTIONS

REAR TAG MOUNT - HONDA REBEL

WIRING

1. Cut the stock wires from the brake/run light and the left and right turn signals from the tail section. Be sure to leave enough wire if soldering back the stock lights is desired.
2. Cut connectors off the Burly wires as shown below. Strip all wires and solder according to the following wiring schematic. Extra wire and 2 load equalizers are required as hyper flash will occur without them.
NOTE: Wire extensions and load equalizers are not included. Ground wire from the stock brake/run light is not needed. Don't forget the heat shrink!
3. Wiring while assembled on the bike is required.



INSTALLATION INSTRUCTIONS

REAR TAG MOUNT - HONDA REBEL

ASSEMBLY

1. Install Burly rear bracket to the struts with the four bolts, nuts, and washers provided.
2. Mount the lights to the rear bracket with the nuts and washers provided.
3. Route the wires ensuring none are dangling or pinched.
4. Slip on the rear fender and continue routing/soldering the wires.
5. Mount on rear fender with the two bolts.
6. Connect the wires and place back the storage bin and rider seat.
7. Turn on bike and test lights one final time.
8. Install Burly license plate bracket to the rear bracket with the two bolts provided.
9. Bolt on license plate and Burly license plate frame.

DISCLAIMER: After Installation, be sure to check full suspension travel and rear tire width. Components might contact rear tire. Additional spacers might be required.

