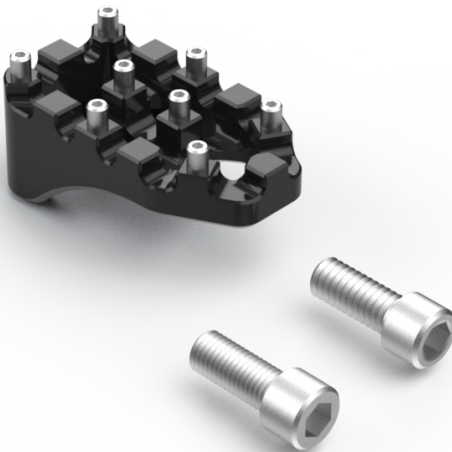


INSTALLATION INSTRUCTIONS

MX EVOLUTION TOE PEG

WARNINGS & ALERTS:

- READ AND FOLLOW ALL INSTRUCTIONS FOR PROPER INSTALLATION.
- IMPROPER INSTALLATION CAN CAUSE UNSATISFACTORY AND/OR UNSAFE OPERATION.
- READ ALL THE INSTRUCTIONS CAREFULLY BEFORE INSTALLING THIS KIT ON YOUR MOTORCYCLE. USE YOUR SERVICE MANUAL AS A REFERENCE WHILE INSTALLING THIS KIT.



1. Unbolt and remove your current Toe Peg.
2. Two bolts are included, determine which bolt is required for your application by checking the fit by hand on your lever.
3. Apply medium strength thread locker onto screw and loosely install Toe Peg.
4. Check that the TOE Peg is at the desired position, then tighten the bolt to 10-12 ft-lbs.
5. Allow the thread-locking agent to cure before riding.
6. Test your new Burly MX Evolution Toe Peg to ensure proper functionality, then go for a test ride!



FIGURE 1

LIMITED GUARANTEE

We continually inspect and try to improve our products. All parts have been inspected prior to packaging, and our guarantee is limited to replacement of defective parts. This guarantee is in lieu of all guarantees or warranties implied or expressed. Because we can not control the application of our products, the buyer assumes risks for any and all damage caused by themselves or any third party, by virtue of failure of these parts. We make no warranty as to products distributed by us, expressed or implied, including without limitation, any warranties or merchant ability and fitness for particular purpose. We will, however, pass on all warranties made by the manufacturer, who has sole responsibility for performing such warranties. The manufacturer shall solely be responsible for any damage to person or property arising from design, manufacturing and testing of all products, and we accept no liability for such damages. We shall not be liable for indirect or consequential damages.