



## Installation Instructions Burly MX Floorboards

### WARNINGS & ALERTS

- Be certain motorcycle is turned off, placed securely on a lift or stand before installing product.
- Read all the instructions carefully before installing this kit on your motorcycle. Use your authorized Harley-Davidson service manual as a reference while installing this kit.

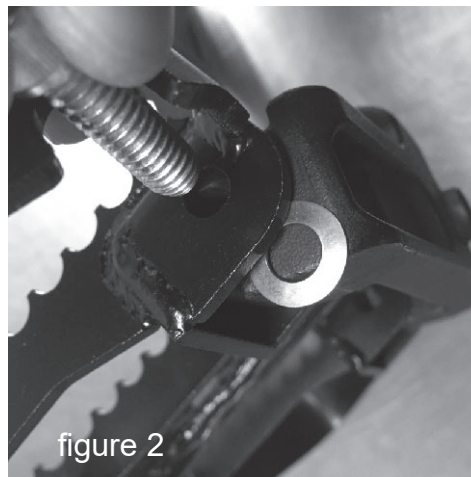
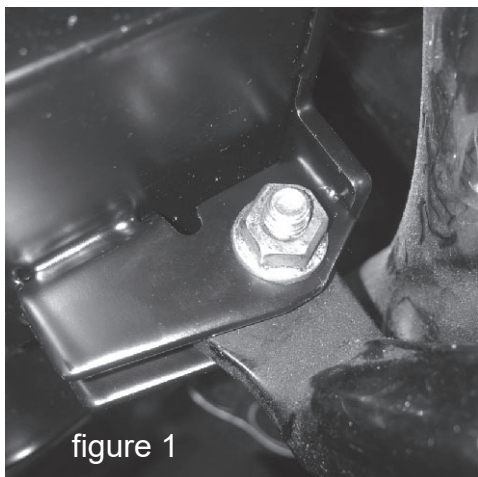
### INSTALLATION INSTRUCTIONS

- 1.) Turn Off Motorcycle and place securely on a lift or side stand.
- 2.) Remove existing Floorboards as applicable. Consult your Service Manual for specific instructions.

#### 3.) INSTALLATION

**Rider Floorboards** – Install floorboards using existing shoulder bolts and lock nuts removed from old floorboard assembly (see Figure 1). Tighten to 12 ft-lbs.

**Passenger Floorboards** – Install floorboards by placing supplied Bellville spring washer in between footboard support and floorboard clevis (see Figure 2). Insert bolt through floorboard clevis, Bellville washer, and footboard support and fasten using lock nuts. Tighten to approximately 12 ft-lbs to ensure a small gap allowance between Bellville washer, floorboard clevis, and footboard support. Loosen or tighten bolt and nut as required to allow for floorboard to fold up and down with desired tension.



### LIMITED GUARANTEE

We continually inspect and try to improve our products. All parts have been inspected prior to packaging, and our guarantee is limited to replacement of defective parts. This guarantee is in lieu of all guarantees or warranties implied or expressed. Because we cannot control the application of our products, buyer assumes risks for any and all damage caused by himself or third party, by virtue of failure of these parts. We make no warranty as to products distributed by us, expressed or implied, including without limitation any warranties or merchant ability and fitness for a particular purpose. We will however, pass on all warranties made by the manufacturer, who has sole responsibility for performing such warranties. The manufacturer shall solely be responsible for any damage to person or property arising from design, manufacturing and testing of all products, and we accept no liability for such damages. We shall not be liable for indirect or consequential damages.

888-367-1871 714-367-1871  
info@burlybrand.com <http://www.burlybrand.com>