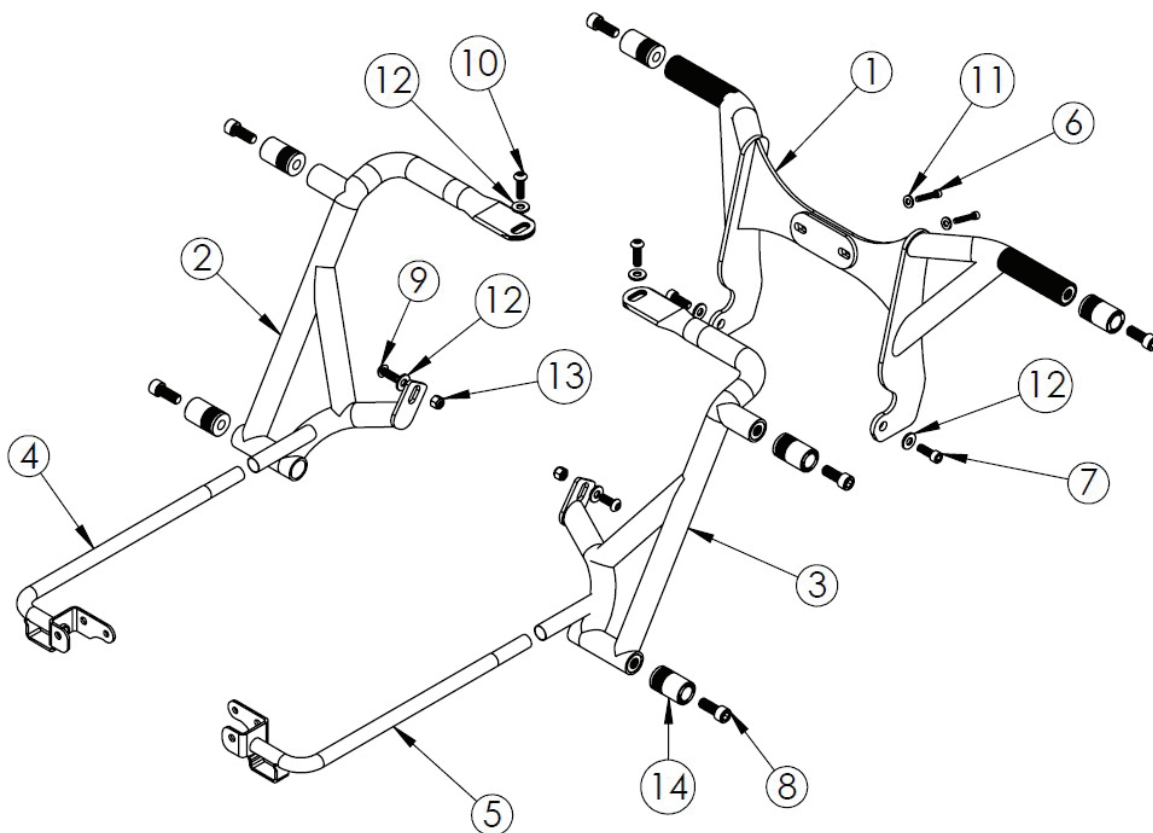


INSTALLATION INSTRUCTIONS

BRAWLER KIT, TOURING 2014-UP



ITEM NO.	DESCRIPTION	QTY	Torque
1	BURLY BRAWLER, FRONT WELDED ASSEMBLY, TOURING 2014-UP	1	
2	LEFT SADDLEBAG GUARD, WELDED ASSEMBLY, TOURING 2014-UP	1	
3	RIGHT SADDLEBAG GUARD, WELDED ASSEMBLY, TOURING 2014-UP	1	
4	LEFT SADDLEBAG RAIL, WELDED ASSEMBLY, TOURING 2014-UP	1	
5	RIGHT SADDLEBAG RAIL, WELDED ASSEMBLY, TOURING 2014-UP	1	
6	SHCS 1/4-20 X 1-3/8, ZINC PLATED	2	90-110 in/lbs
7	SHCS 3/8-16 X 1", ZINC PLATED	2	15-20 ft/lbs
8	SHCS 1/2-13 X 1-1/4, ZINC PLATED	6	35-40 ft/lbs
9	BHCS 3/8-16 X 1", ZINC PLATED	2	32-36 ft/lbs
10	BHCS 3/8-16 X 1-1/4", ZINC PLATED	2	32-36 ft/lbs
11	WASHER .281 ID X .625 OD X .05 THICK, ZINC PLATED	2	
12	WASHER .406 ID X .812 OD X .08 THICK, ZINC PLATED	6	
13	NUT 3/8-16 ELASTIC LOCK, ZINC PLATED	2	32-36 ft/lbs
14	DELIN 2" BRAWLER SLIDER, BURLY BRAWLER KIT	6	

INSTALLATION INSTRUCTIONS

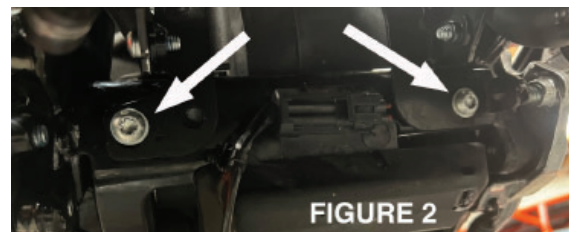
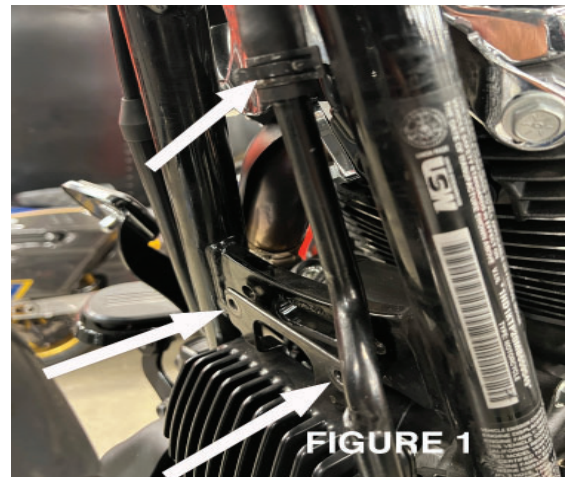
BRAWLER KIT, TOURING 2014-UP

WARNINGS & ALERTS

- READ ALL THE INSTRUCTIONS CAREFULLY BEFORE INSTALLING THIS KIT ON YOUR MOTORCYCLE. USE THE APPROPRIATE HARLEY-DAVIDSON SERVICE MANUAL AS A REFERENCE WHILE INSTALLING THIS KIT.
- IMPROPER INSTALLATION CAN CAUSE UNSATISFACTORY AND/OR UNSAFE OPERATION.
- AS WITH MOST MODIFICATIONS TO YOUR MOTORCYCLE, HANDLING AND GENERAL “FEEL” WILL BE AFFECTED. TAKE THE TIME TO SAFELY BECOME ACCUSTOMED TO THE NEW CHARACTERISTICS OF YOUR MOTORCYCLE.
- THIS PRODUCT IS DESIGNED TO REDUCE DAMAGE IN THE EVENT THE BIKE IS DROPPED. IT WILL NOT PREVENT ALL DAMAGE.
- FRONT WELDED ASSEMBLY CANNOT BE INSTALLED ON TWIN-COOLED MODELS.
- FRONT WELDED ASSEMBLY MAY INTERFERE WITH CHIN SPOILER ON SOME MODELS (REMOVE OR REPLACE WITH OIL COOLER COVER)
- INSTALLATION OF THE FRONT WELDED ASSY. ON FRAME MOUNTED FAIRING MODELS (SUCH AS ROAD GLIDE) WILL REQUIRE NEW OR FABRICATED LOWER FAIRING SUPPORT BRACKETS. FOR DETAILS CHECK CURRENT NOTES FOR YOUR MODEL AT BURLYBRAND.COM
- WITH THE FRONT WELDED ASSY. INSTALLED, COMPRESS THE FRONT SUSPENSION (REMOVE FORK SPRINGS) THROUGH ITS FULL RANGE OF TRAVEL WHILE TURNING THE FRONT END FULLY RIGHT & LEFT. IF ANY INTERFERENCE BETWEEN THE FRONT WELDED ASSY. AND OTHER COMPONENTS IS FOUND (FENDER, TIRE, CABLES, BRAKE HOSES, ETC), YOU MUST CORRECT THOSE ISSUES BEFORE RIDING THE MOTORCYCLE.
- **WARNING:** FAILURE TO CORRECT ANY INTERFERENCE MAY RESULT IN LOSS OF VEHICLE CONTROL, SERIOUS INJURY OR DEATH.
- **WARNING:** KEEP FEET, LEGS AND OTHER OBJECTS CLEAR OF WELDED ASSY. / SLIDERS AT ALL TIMES TO AVOID POSSIBLE LOSS OF CONTROL, SERIOUS INJURY OR DEATH.

Front Welded Assembly Installation

1. If present, remove the existing front engine guard.
2. If your model has an oil cooler line running down the front frame down tubes, the regulator / cooler assembly must be separated from the frame. If not skip to step 4.
3. Remove the Regulator / Cooler Bracket screws, 2 top (Figure 1) and 2 bottom (Figure 2) to separate the Regulator / Cooler assembly from the frame and disconnect the top hose connection (squeeze clamp). A small amount of engine oil may drain from the hose once disconnected.
4. Install the front welded assy. in front of the frame and behind the regulator / cooler bracket (if equipped).
5. With the supplied 3/8"-16 X 1" screws (#7) and washers (#12), A drop of thread lock on each bolt is recommended. Start to loosely bolt on the front welded assy. using one on each side to mount the front welded assy. to the bikes frame. (Refer to exploded view on page 1 and Figure 3 for location reference). Do not tighten at this time.



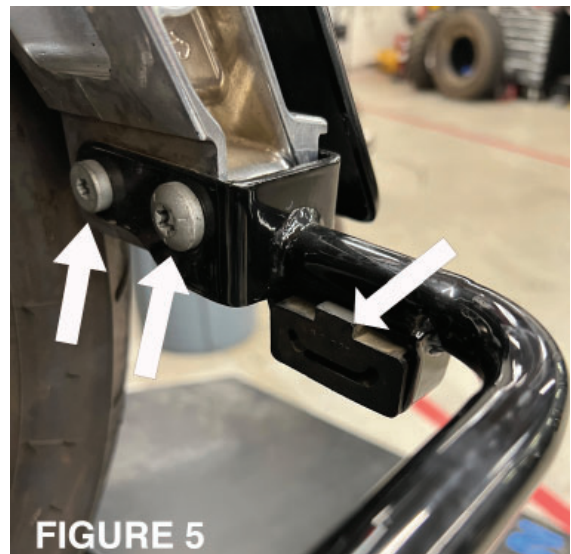
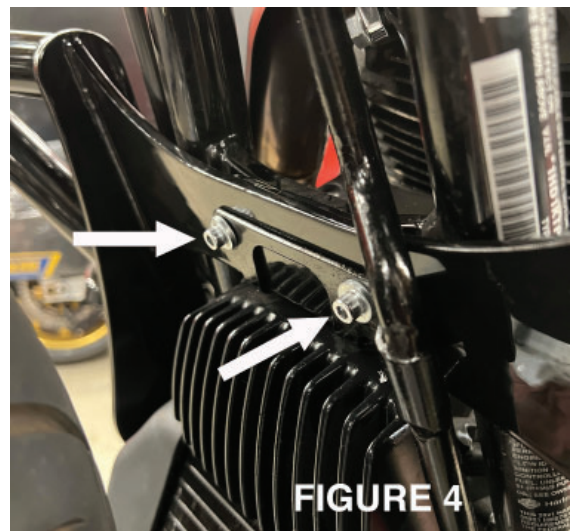
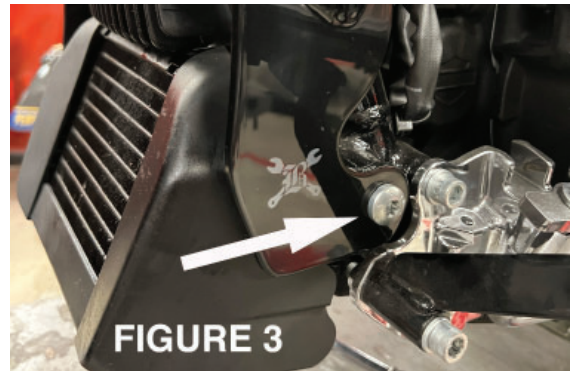
INSTALLATION INSTRUCTIONS

BRAWLER KIT, TOURING 2014-UP

6. Next, using the supplied 1/4" -20 X 1 -3/8 screws (#6) and washers (#11), bolt the top of the front welded assy. to the frame (welded assy. between the frame and the regulator / cooler bracket(if equipped), do not tighten yet. See Figure 4.
7. If previously removed - reinstall bottom Regulator / Cooler Bracket screws and tighten (20-22 ft/lbs)
8. Tighten all front welded assy. mounting screws as listed in the table on page 1.

Rear Saddlebag Guard Installation

1. Remove the seat, saddlebags and side covers.
2. Remove the muffler(s) saddlebag guards & support rails
3. Remove and save the rubber muffler mount(s) that will be reused on the supplied support rails.
4. Install the supplied left (#4) and right (#5) support rails re-using the stock fasteners and drops of thread lock. Install the stock rubber muffler mount(s) into each Burly Support rail. See Figure 5.
5. Next slide each saddlebag guard (#2 & #3) over the corresponding support rail and loosely mount to the bike using 3/8"-16 X 1-1/4" screws (#10) and washers (#12) for the top mounts and 3/8"-16 X 1" screws (#9), washers (#12) and lock nuts (#13) for the side mounts. And drops of thread lock. See Figure 6.
6. Now that the saddlebag support rails and saddlebag guards are in place, fully tighten all supplied fasteners as listed in the table on page 1.
7. For the reused fasteners used to attach the support rails on 2014 and later models, tighten the larger (outer) screw to 30-37 ft/lbs and the smaller (inner) screw to 15-20 ft/lbs See Figure 5.
8. Check all fasteners for proper tightness.
9. Reinstall the muffler(s), side covers, seat and saddlebags



INSTALLATION INSTRUCTIONS

BRAWLER KIT, TOURING 2014-UP

Final Checks

1. Check all fasteners for proper tightness
 2. Check and correct any interference with suspension, exhaust or steering movement
 3. AS WITH MOST MODIFICATIONS TO YOUR MOTORCYCLE, HANDLING AND GENERAL "FEEL" WILL BE AFFECTED. TAKE THE TIME TO SAFELY BECOME ACCUSTOMED TO THE NEW CHARACTERISTICS OF YOUR MOTORCYCLE. ENJOY!
- **WARNING: FAILURE TO CORRECT ANY INTERFERENCE MAY RESULT IN LOSS OF VEHICLE CONTROL, SERIOUS INJURY OR DEATH.**
 - **WARNING: KEEP FEET, LEGS AND OTHER OBJECTS CLEAR OF WELDED ASSEMBLY / SLIDERS AT ALL TIMES TO AVOID POSSIBLE LOSS OF CONTROL, SERIOUS INJURY OR DEATH.**

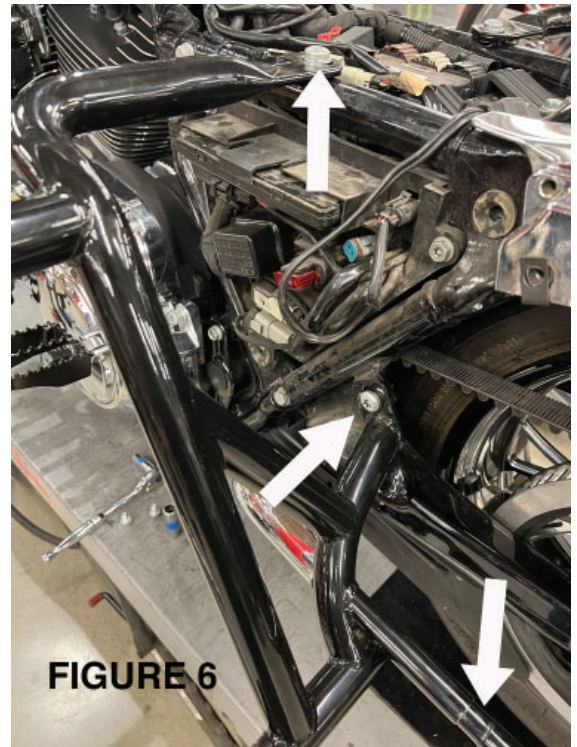


FIGURE 6

LIMITED GUARANTEE

We continually inspect and try to improve our products. All parts have been inspected prior to packaging, and our guarantee is limited to replacement of defective parts. This guarantee is in lieu of all guarantees or warranties implied or expressed. Because we can not control the application of our products, the buyer assumes risks for any and all damage caused by themselves or any third party, by virtue of failure of these parts. We make no warranty as to products distributed by us, expressed or implied, including without limitation, any warranties or merchant ability and fitness for particular purpose. We will, however, pass on all warranties made by the manufacturer, who has sole responsibility for performing such warranties. The manufacturer shall solely be responsible for any damage to person or property arising from design, manufacturing and testing of all products, and we accept no liability for such damages. We shall not be liable for indirect or consequential damages.

