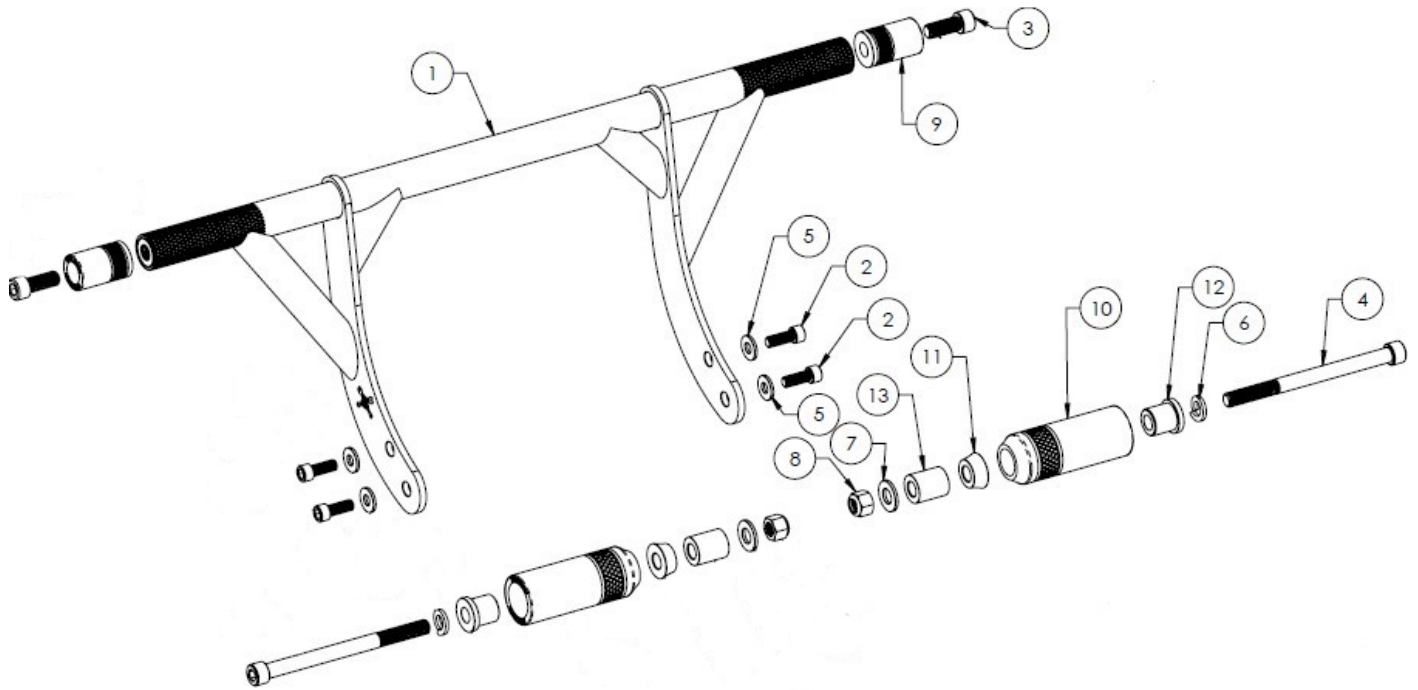


INSTALLATION INSTRUCTIONS

BRAWLER KIT, DYNA 2006-UP



ITEM NO.	DESCRIPTION	QTY.	Torque
1	BURLY BRAWLER, FRONT WELDED ASSEMBLY, DYNA 2006-UP	1	
2	SHCS 3/8-16 X 1", ZINC PLATED	4	30-35 ft/lbs
3	SHCS 1/2-13 X 1-1/4, ZINC PLATED	2	35-40 ft/lbs
4	SHCS 1/2-13 X 6-1/2", ZINC PLATED	2	35-40 ft/lbs
5	WASHER .406 ID X .812 OD X .08 THICK, ZINC PLATED	4	
6	WASHER SPLIT LOCK .512 ID X .869 OD X .125 THICK, ZINC PLATED	2	
7	WASHER .541 ID X 1.092 OD X .10 THICK, ZINC PLATED	2	
8	NUT 1/2-13 ELASTIC LOCK, ZINC PLATED	2	75-85 ft/lbs
9	DELRIN 2" BRAWLER SLIDER, BURLY BRAWLER KIT	2	
10	REAR DELRIN BRAWLER SLIDER, BURLY BRAWLER KIT	2	
11	SPACER, REAR BRAWLER SLIDER, BURLY BRAWLER KIT	2	
12	PRESS IN SLEEVE, REAR BRAWLER SLIDER, BURLY BRAWLER KIT (installed)	2	
13	SPACER, BURLY BRAWLER, DYNA 2006-UP	2	

INSTALLATION INSTRUCTIONS

BRAWLER KIT, DYNA 2006-UP

WARNINGS & ALERTS

- READ ALL THE INSTRUCTIONS CAREFULLY BEFORE INSTALLING THIS KIT ON YOUR MOTORCYCLE. USE THE APPROPRIATE HARLEY DAVIDSON SERVICE MANUAL AS A REFERENCE WHILE INSTALLING THIS KIT.
- IMPROPER INSTALLATION CAN CAUSE UNSATISFACTORY AND/OR UNSAFE OPERATION.
- AS WITH MOST MODIFICATIONS TO YOUR MOTORCYCLE, HANDLING AND GENERAL "FEEL" WILL BE AFFECTED. TAKE THE TIME TO SAFELY BECOME ACCUSTOMED TO THE NEW CHARACTERISTICS OF YOUR MOTORCYCLE.
- THIS PRODUCT IS DESIGNED TO REDUCE DAMAGE IN THE EVENT THE BIKE IS DROPPED, IT WILL NOT PREVENT ALL DAMAGE
- MOTORCYCLE MUST HAVE MID CONTROLS. FRONT WELDED ASSEMBLY CANNOT BE INSTALLED WITH FORWARD CONTROLS
- FRONT WELDED ASSEMBLY CANNOT BE INSTALLED WITH FRONT SPOILER
- REAR BRAWLER SLIDERS MAY INTERFERE WITH THE USE OF SADDLEBAGS
- WITH THE FRONT WELDED ASSEMBLY INSTALLED, COMPRESS THE FRONT SUSPENSION (REMOVE FORK SPRINGS) THROUGH ITS FULL RANGE OF TRAVEL WHILE TURNING THE FRONT END FULLY RIGHT & LEFT. IF ANY INTERFERENCE BETWEEN THE FRONT WELDED ASSEMBLY AND OTHER COMPONENTS IS FOUND (FENDER, TIRE, CABLES, BRAKE HOSES, ETC), YOU MUST CORRECT THOSE ISSUES BEFORE RIDING THE MOTORCYCLE. **WARNING: FAILURE TO CORRECT ANY INTERFERENCE MAY RESULT IN LOSS OF VEHICLE CONTROL, SERIOUS INJURY OR DEATH**
- **WARNING: KEEP FEET, LEGS AND OTHER OBJECTS CLEAR OF WELDED ASSY. / SLIDERS AT ALL TIMES TO AVOID POSSIBLE LOSS OF CONTROL, SERIOUS INJURY OR DEATH.**

Front Welded Assembly Installation

1. Carefully position the welded assy. in front of the frame behind the front wheel.
2. With the supplied 3/8"-16 X 1" screws (#2) and washers (#5), A drop of thread lock on each bolt is recommended. Loosely bolt on one side of the welded assy. Do not tighten at this time. See Figure 1.
3. Move to the other side of the motorcycle and loosely install the other side of the welded assy.
4. Now that the welded assy. is loosely installed with the four screws and washers, make sure there is clearance between the welded assy. and rectifier. See Figure 2.
5. Fully tighten all of them (30-35 ft-lbs) while ensuring there remains clearance from the rectifier.



BURLY BRAND
MOTORCYCLE  ACCESSORIES

INSTALLATION INSTRUCTIONS

BRAWLER KIT, DYNA 2006-UP

Rear Brawler Sliders Installation

1. Use a proper motorcycle jack to full extend the rear suspension (rear tire slightly off the ground)
2. Remove the mounting bolts (or nuts) from the top rear shock mounts. (As well as the stud, inner nut & washer if equipped.)
3. Take one of the supplied 1/2"-13 X 6 1/2" screws (#4) and onto it install a lock washer (#6), then a Rear Slider (#10 w/#12 already installed), then Spacer (#11).
4. Apply thread lock onto the exposed threads of the screw.
5. Using the bolt / slider assembly (from step 3 & 4 with thread lock), slide the bolt through the rear shock. Then through Spacer (#13), thread bolt into frame and tighten (35-40 ft-lbs).
6. Install Flat Washer (#7) and Lock Nut (#8) onto exposed bolt threads and tighten (75-85 ft-lbs) See Figure 3 for reference of complete installation.
7. Repeat on the other side.

Final Checks

1. Check all fasteners for proper tightness
2. Check and correct any interference with suspension or steering movement
3. AS WITH MOST MODIFICATIONS TO YOUR MOTORCYCLE, HANDLING AND GENERAL "FEEL" WILL BE AFFECTED. TAKE THE TIME TO SAFELY BECOME ACCUSTOMED TO THE NEW CHARACTERISTICS OF YOUR MOTORCYCLE. ENJOY!
4. **WARNING: FAILURE TO CORRECT ANY INTERFERENCE MAY RESULT IN LOSS OF VEHICLE CONTROL, SERIOUS INJURY OR DEATH**
5. **WARNING: KEEP FEET, LEGS AND OTHER OBJECTS CLEAR OF WELDED ASSEMBLY / SLIDERS AT ALL TIMES TO AVOID POSSIBLE LOSS OF CONTROL, SERIOUS INJURY OR DEATH.**

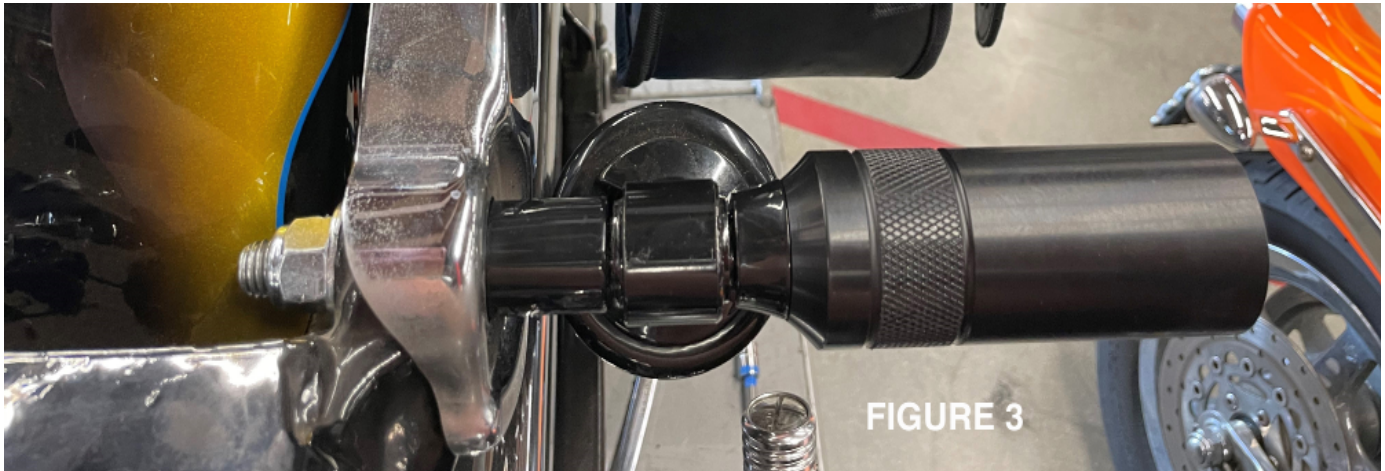


FIGURE 3

LIMITED GUARANTEE

We continually inspect and try to improve our products. All parts have been inspected prior to packaging, and our guarantee is limited to replacement of defective parts. This guarantee is in lieu of all guarantees or warranties implied or expressed. Because we can not control the application of our products, the buyer assumes risks for any and all damage caused by themselves or any third party, by virtue of failure of these parts. We make no warranty as to products distributed by us, expressed or implied, including without limitation, any warranties or merchant ability and fitness for particular purpose. We will, however, pass on all warranties made by the manufacturer, who has sole responsibility for performing such warranties. The manufacturer shall solely be responsible for any damage to person or property arising from design, manufacturing and testing of all products, and we accept no liability for such damages. We shall not be liable for indirect or consequential damages.

